

## HOW WE GOT STARTED & WHAT WE ARE ALL ABOUT

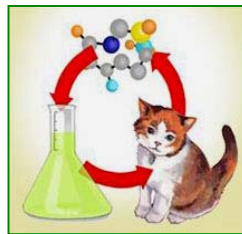
*Rosemary Szepesi received her B.A. in business administration from Sacred Heart University. She then managed a bakery for 2 years. She then applied her business knowledge at the Union Trust Bank for 8 years, surviving its various buy-outs until it became First Union when she left to pursue personal business endeavors.*

**After** a successful 12-yr career as a teacher and researcher at NYU Medical Center (32 scientific publications), **Dr. Seligman** took up a new career putting his research to use as a manufacturer & supplier of high quality antioxidant supplements to humans.

**After** sixteen years as a successful supplier of nutrient supplements he has partnered with his wife, **Rosemary Szepesi** to form **Pet Nutritional Science<sup>LP</sup>**, a manufacturer & distributor of antioxidant supplements for cats (later dogs will be added). Our products are the only commercial products for animals that contain glutathione.

*Dr. Myron L. Seligman, Ph.D. in the Medical Sciences received his B.A. from Johns Hopkins University, and his M.S. from George Washington University. He then received his doctorate from NYU Medical Center.*

*(See inside for what glutathione does and how it is supplied. See our website for Dr. Seligman's Resumé.)*



Pet Nutritional Science<sup>LP</sup>

P.O. Box 1386  
Fairfield, CT 06825  
(203) 374-2287  
Fax (203) 372-2531

[myron@pnsience.com](mailto:myron@pnsience.com)  
[rosemary@pnsience.com](mailto:rosemary@pnsience.com)  
[www.pnsience.com](http://www.pnsience.com)

# PET NUTRITIONALS SCIENCE<sup>LP</sup>

ANTIOXIDANT SUPPLEMENTS  
WITH GLUTATHIONE & GLUCOSAMINE SO<sub>4</sub>  
FOR CATS AND DOGS

*Healthy Solutions Now*



**PRODUCTS:**

**KITTY LIX™**

**KITTY LIX™ POWDER**

**&**

**PUPPY CHEWZ™ caps**

[www.pnsience.com](http://www.pnsience.com)



*Kitty Lix™, 60 mL of olive oil suspension with glutathione and vitamin E acetate. Kitty Lix™ Powder, 30 gm mixture of glutathione, calcium ascorbate, and vitamin E succinate. There are NO excipients -*

### KITTY LIX™ Suspension, 60 mL

CONTAINS PER MILLILITER (mL):

L-Glutathione, reduced.....6 mg\*  
 Vitamin E (as the Acetate).....6 mg (8.0 IU)

(All values are minimums unless otherwise stated.)

Kitty Lix™ is a tasty mixture in olive oil suspension for easy addition to wet or dry cat food or can be given directly into the mouth. For adult cats, give 1.0 mL of **well-shaken** suspension per 10 lbs of body weight daily with food. For kittens 6 weeks and older, give ½ mL daily with food. For highly stressed, sick, injured, elderly cats or nursing queens give 1.0 to 2.0 mL of suspension twice daily in between feedings.

One serving is 1.0 mL (1 full dropper). Contents are equal to 60 servings or 2 months supply for 1 cat. A calibrated dropper is included with each bottle.

### KITTY LIX™ Powder, 30 & 15 gms

CONTAINS PER GRAM (gm):

L-Glutathione, reduced.....500 mg\*  
 Vitamin E (as the Succinate)....250 mg (187.5 IU)  
 Vitamin C (as the Calcium salt).250 mg (176.5 IU)

(All values are minimums unless otherwise stated.)

One serving is 50 (mgs) or 1/8 tsp. The contents are equal to about 4 months supply (30 gm bottle) for one cat, 2 months supply (15 gm bottle).

\* No RDA has been established.

## WHAT DOES GLUTATHIONE DO?

**Glutathione** is the most powerful, the most versatile and the most important of the body's self-generated anti-oxidants. A unique substance composed of three amino acids joined together glutathione protects every tissue, every cell and every organ in the body.

**Research** conducted at some of the nation's most prestigious scientific institutions has shown that glutathione:

- Both neutralizes free radicals and decreases free radical formation
- Is the strongest anti-cancer agent manufactured by the mammalian body
- Relieves arthritis symptoms by neutralizing the agents of inflammation, free radicals
- Minimizes and controls asthma
- Repairs liver damage caused by hepatitis
- Refreshes spent vitamin C and Vitamin E and restores their antioxidant capabilities
- Cell glutathione levels typically drop as all animals age, and the result is a gradual decline in immune function, 17% between the ages of 5 and 10 in cats & dogs.
- Animals with higher levels of glutathione in their blood and tissues live longer and healthier.
- Animals with low levels decline dramatically as they age and die earlier.

**Glutathione** can be found in a wide variety of foods and one of the best sources is meat. However, cooking destroys most glutathione. Almost all commercially available cat and dog foods are cooked. Thus, no glutathione. Other natural sources are vegetal. Cats are obligate carnivores and dogs are mostly carnivorous. So there are no natural sources of glutathione available to domestic cats & dogs. That is where we come in. We provide a readily orally bioavailable source of GSH. Taken daily along with protein, your pet can live a healthy, happy and long life.



### PUPPY CHEWZ™ 60 capsules

CONTAINS PER CAPSULE (gm):

#### Small capsules (175 mg)

Glucosamine sulfate.....87.50 mg\*  
 L-Glutathione, reduced.....43.75 mg\*  
 Vitamin E Succinate.....21.88 mg (26.5 IU)  
 Vitamin C (Calcium salt).....21.88 mg (36.5 IU)

#### Mid-sized capsules (345 mg)

Glucosamine sulfate.....172.50 mg\*  
 L-Glutathione, reduced.....86.25 mg\*  
 Vitamin E Succinate.....43.13 mg (52.3 IU)  
 Vitamin C (Calcium salt).....43.13 mg (71.9 IU)

#### Large capsules (660 mg)

Glucosamine sulfate.....330.00 mg\*  
 L-Glutathione, reduced.....165.00 mg\*  
 Vitamin E Succinate.....82.50 mg (100.0 IU)  
 Vitamin C (Calcium salt).....82.50 mg (137.6 IU)

The contents are equal to a 2 months supply for one dog, 1 month's supply for 2 dogs.

Puppy Chewz™ capsules contain a mixture of glutathione, calcium ascorbate and vitamin E succinate and glucosamine Sulfate for easy dosing or they can be opened for addition to wet dog food. Adult dogs:

up to 30 lbs: 1 small size cap daily with food.

35 to 80 lbs: 1 mid-size cap daily with food.

85 lbs & up: 1 large size cap daily with food.

Puppies 8 wks and older, half a cap daily with food. For highly stressed, sick, injured, elderly dogs or nursing bitches give 1 cap twice daily with wet food or mixed in with a puppy liquid formula.